

TO LET NEW INDUSTRIAL UNIT

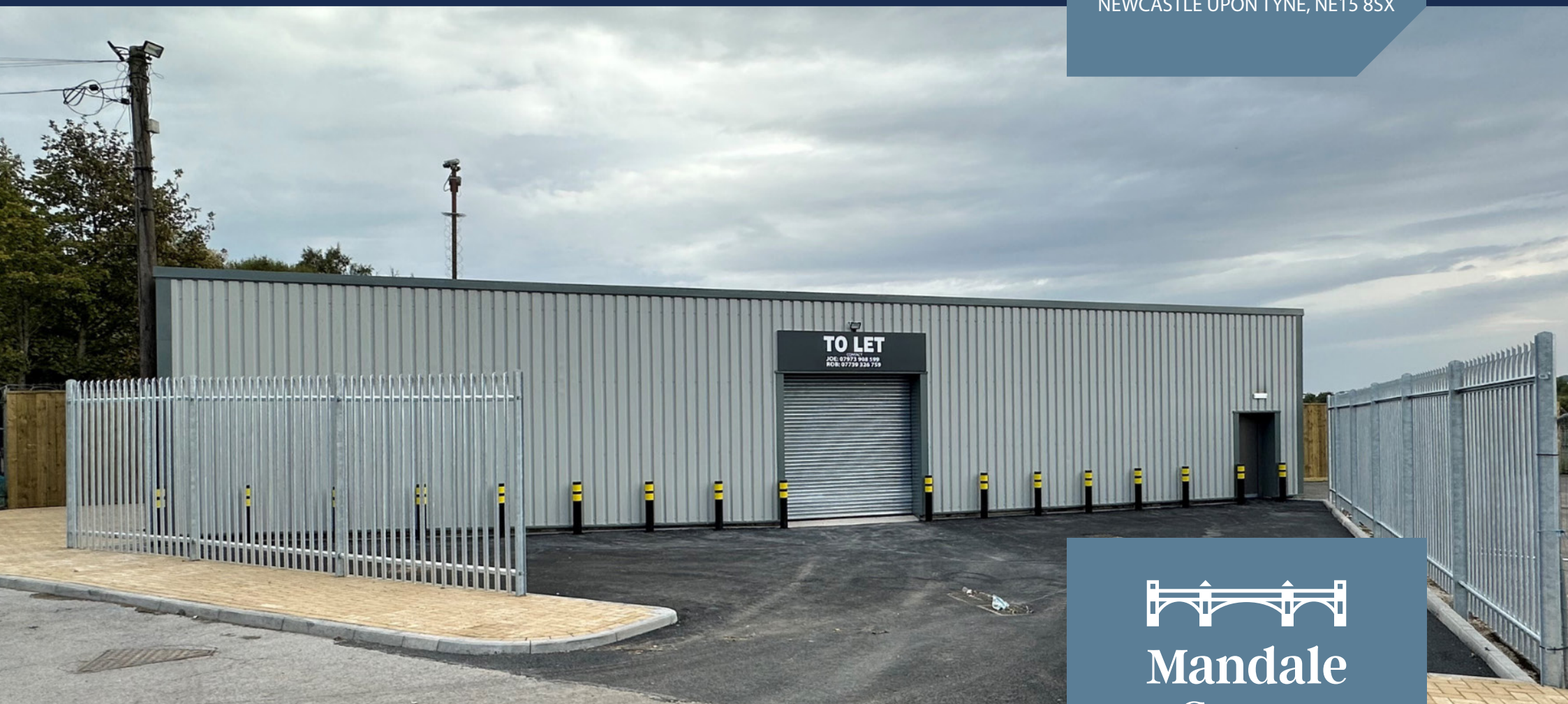
1,000 sq. ft. + forecourt

A flexible workspace to suit your business needs

MANDALE PARK

NE15

LEMINGTON ROAD,
NEWCASTLE UPON TYNE, NE15 8SX



**Mandale
Group**

MANDALE PARK

NE15

LEMINGTON ROAD,
NEWCASTLE UPON TYNE,
NE15 8SX



THE UNIT

Unit 26 is a refurbished industrial unit fully equipped with a kitchenette, WC, electric roller shutter door, forecourt to the front of the property and ample free parking.

LOCATION

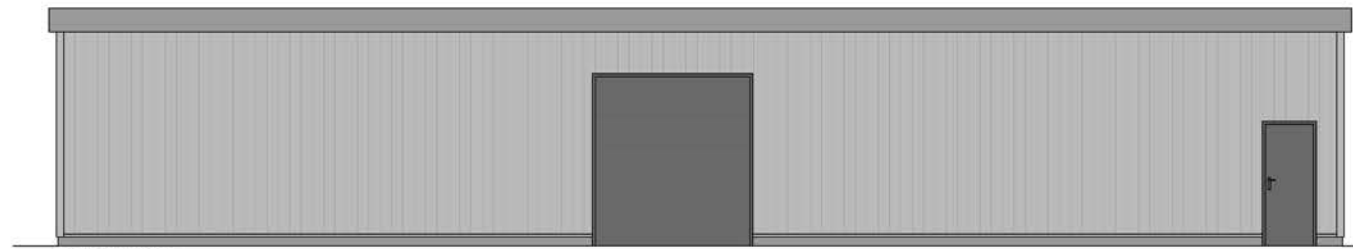
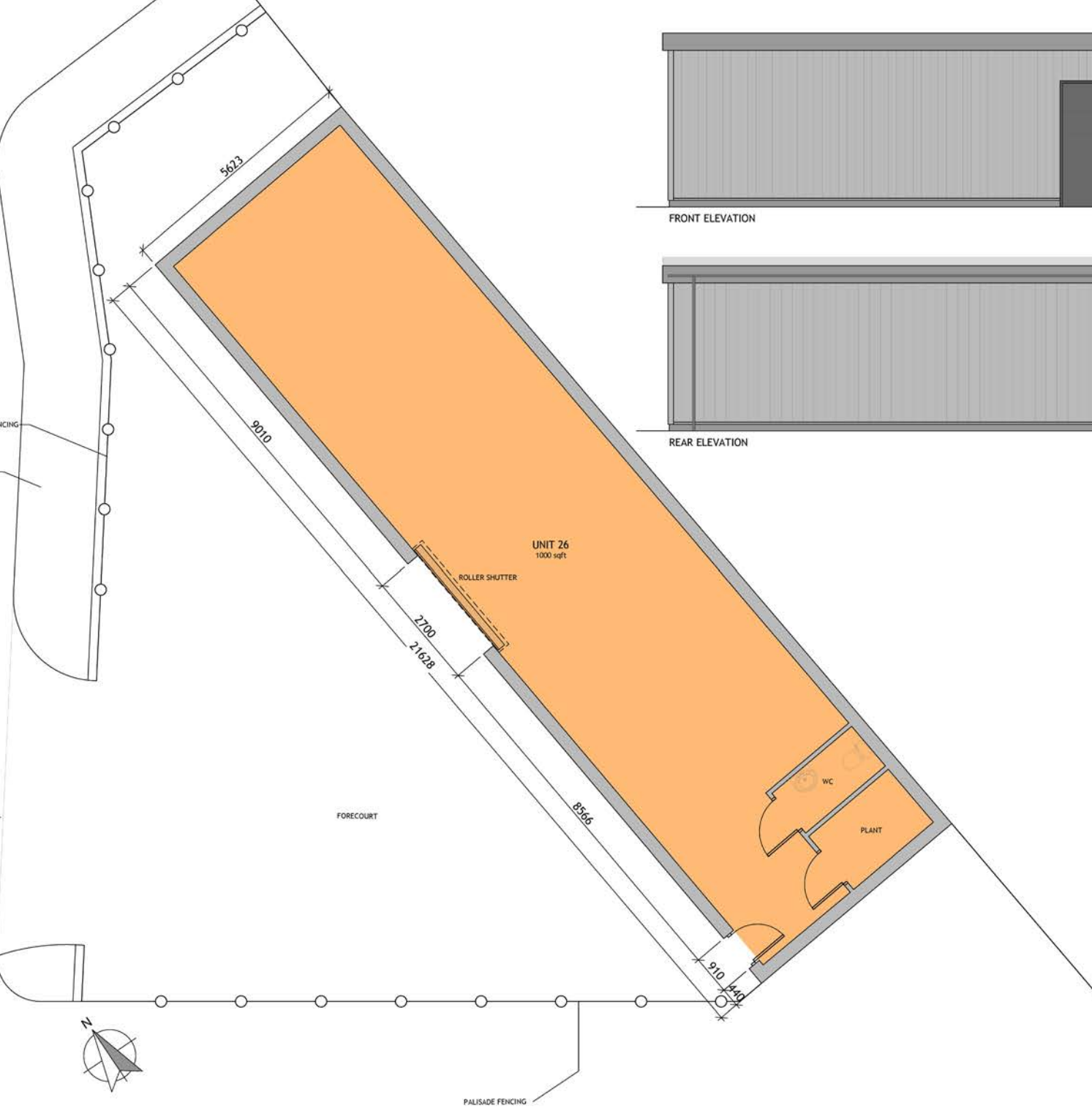
Mandale Park NE15 is situated in Lemington, just outside of Newcastle upon Tyne, approximately 6.5 miles from Gateshead. The business park is accessed directly off the A6085 with excellent access to the A1.

HISTORY

Our new business park sits on a development steeped in a rich history dating back to the industrial age. Opened in 1787, and spanning nearly 200 years of production, Lemington Glass Works is an iconic local site featuring one of only four surviving glass making cone buildings in the country. Under our new ownership, we are restoring this unique development back into a busy hive of workspaces, bringing jobs and businesses back to Lemington.



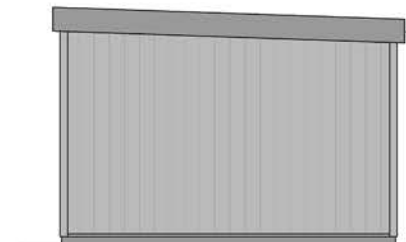
UNIT	TYPE	UNIT SQ. FT.	FLOORS	ANNUAL RENT	SERVICE CHARGE	INSURANCE	NOTES	AVAILABILITY
26	INDUSTRIAL	1,000	1	£14,000 + VAT	£400+ VAT	£250 + VAT		



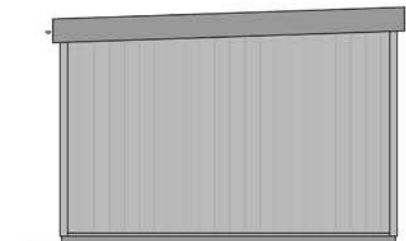
FRONT ELEVATION



REAR ELEVATION



SIDE ELEVATION



SIDE ELEVATION

MANDALE PARK

NE15

LEMINGTON ROAD,
NEWCASTLE UPON TYNE,
NE15 8SX



For details contact:

Nick Atkinson MRICS

Office: 0191 245 1234

Direct: 0191 245 3011

Mob: 07950 319060

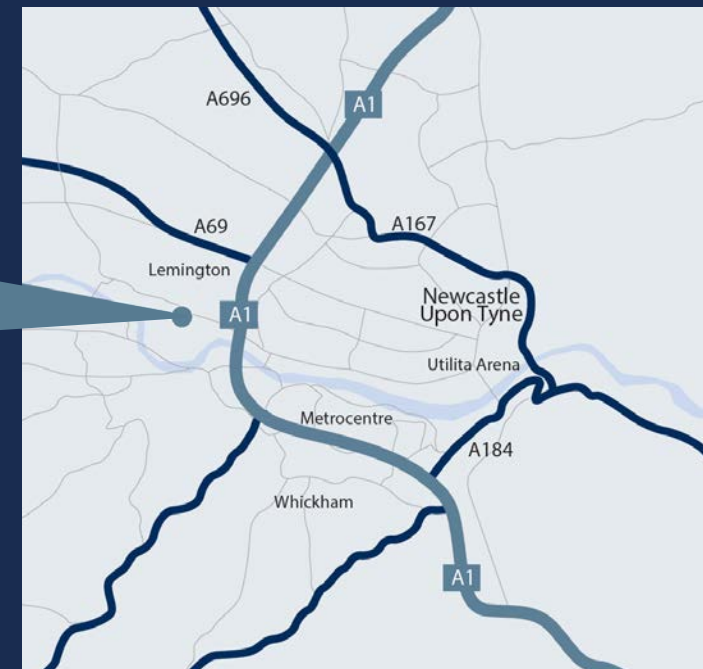
nick@htare.co.uk

htare.co.uk
0191 245 1234



MANDALE PARK

NE15



IMPORTANT NOTICE: These details were compiled July 2021 and whilst every reasonable effort has been made by Mandale Business to ensure accuracy, interested parties are strongly advised to take appropriate steps to verify by independent inspection or enquiry all information for themselves and to take appropriate professional advice. (i) No description or information given about the property or its value, whether written or verbal or whether or not in these particulars ('information') may be relied upon as a statement of representation or fact. Mandale Business and their Agents have any authority to make any representation and accordingly any information given is entirely without responsibility on the part of Mandale Business the seller/lessor. (ii) Any photographs show only certain parts of the property at the time they were taken. Any areas, measurements or distances given are approximate only. (iii) Any reference to alterations to, or use of any part of the property is not a statement that any necessary planning, building regulations or other consent has been obtained. These matters must be verified by any intending buyer/lessee. (iv) Any buyer/lessee must satisfy himself by inspection or otherwise as to the correctness of any information given.