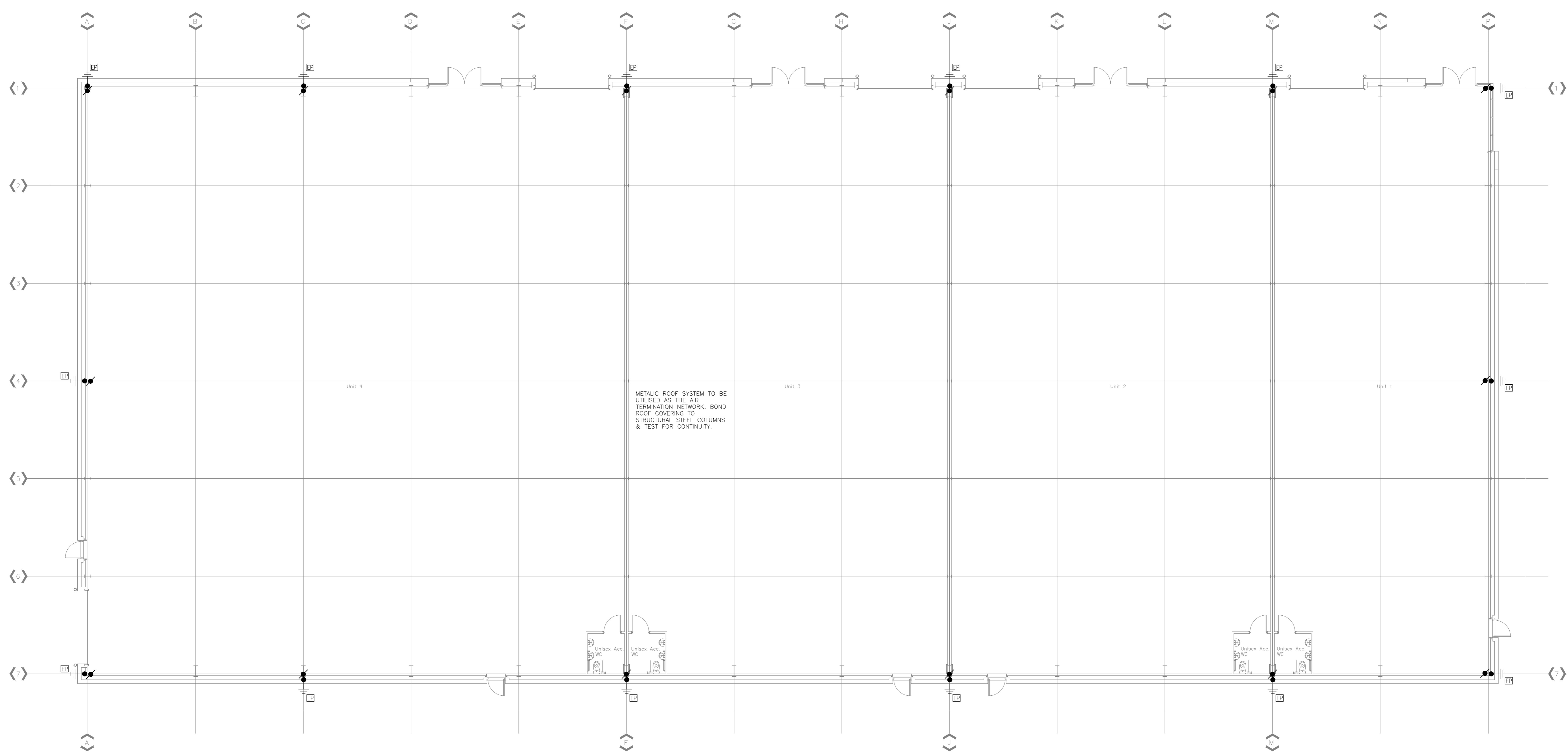
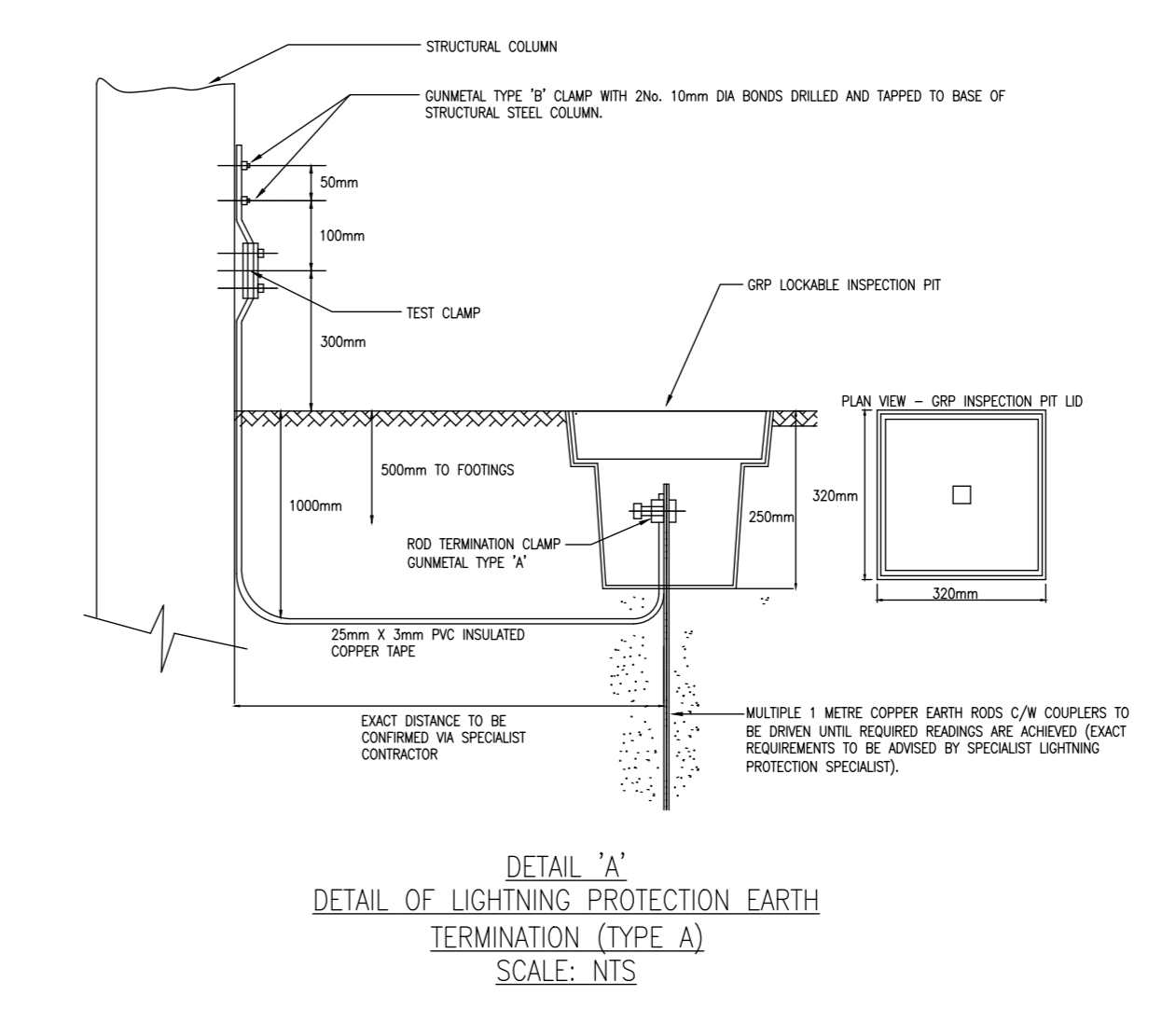


LEGEND

- 25x3MM PVC COATED ALUMINIUM TAPE
- BOND TO STRUCTURAL STEELWORK
- EARTH TERMINATION POINT ENCLOSED IN INSPECTION FIT WITH TAPE CONNECTION TO STEELWORK



PROPOSED LIGHTNING PROTECTION LAYOUT LAYOUT
SCALE @ 1:100



DETAIL 'A'
DETAIL OF LIGHTNING PROTECTION EARTH TERMINATION (TYPE A)
SCALE: NTS

HAZARD	RISK	CONTROL MEASURES
	WORKING AT HEIGHTS •FALLS FROM HEIGHTS •SLIPS, TRIPS & FALLS •FALLING DEBRIS	•METHOD STATEMENT/ PERMIT TO WORK REQUIRED FROM CONTRACTOR •APPOINT APPROVED SPECIALISTS FOR HIGH LEVEL WORK WHERE APPROPRIATE •SUITABLE SAFETY EQUIPMENT •CORRECT PPE •ANNUAL MAINTENANCE PROCEDURES
	FALLING OBJECTS •INJURY FROM FALLING OBJECTS	•METHOD STATEMENT REQUIRED FROM CONTRACTOR •CORRECT PPE •SAFE SITE WORKING PROCEDURES TO BE IMPLEMENTED •PROPER USE OF SCAFFOLDING KICKBOARDS •ADEQUATE SIGNAGE & BARRIERS
	MANUAL HANDLING •INJURY TO SITE PERSONNEL	•METHOD STATEMENT REQUIRED FROM CONTRACTOR •SAFE SITE WORKING PROCEDURES TO BE IMPLEMENTED •CORRECT PPE •ADEQUATE TRAINING PROVIDED •REDUCE RISK THROUGH APPROPRIATE PHASING AND PROGRAMMING OF WORK •DELIVERY AND SITING OF M&E EQUIPMENT
	VEHICLE MOVEMENT •INJURY TO SITE PERSONNEL	•METHOD STATEMENT REQUIRED FROM CONTRACTOR •SUITABLE EQUIPMENT / TRAINING AND SAFE SYSTEMS OF WORK •DELIVERY AND SITING OF LARGE PLANT ITEMS •ADHERE TO PEDESTRIAN WALKWAYS WHERE AVAILABLE •APPROPRIATE SIGNAGE •CORRECT PPE
	NOISE/VIBRATION •INJURY TO SITE PERSONNEL	•METHOD STATEMENT REQUIRED FROM CONTRACTOR •DESIGN TO REDUCE NOISE/VIBRATION TO ACCEPTABLE LEVELS •CORRECT PPE
	HOT WORK •FIRE HAZARDS •BURNS / SCALDING	•METHOD STATEMENT REQUIRED FROM CONTRACTOR •SUITABLE EQUIPMENT / TRAINING AND SAFE SYSTEMS OF WORK •AVOID THE NEED FOR HOT WORK WHERE PRACTICABLE •ADEQUATE COOL DOWN & REVISIT PERIODS ADHERED TO •SUITABLE SAFETY EQUIPMENT •CORRECT PPE

DESIGN INTENT DRAWING
PLEASE NOTE THAT THIS DRAWING IS PURELY FOR INDICATIVE PURPOSES ONLY. THIS DRAWING IS TO DENOTE DESIGN INTENT AND SHALL BE READ IN CONJUNCTION WITH THE CORRESPONDING ELECTRICAL PERFORMANCE SPECIFICATION AND ADDITIONAL TENDER DOCUMENTATION. THE SUCCESSFUL CONTRACTOR SHALL APPOINT A CONSULTANT TO CARRY OUT DETAILED DESIGN.

TO	DATE	BY	DESCRIPTION	CHK	APP
140721	04/11/21	DJW	TENDER	FLB	MAA



CLIENT
NORTHUMBERLAND ESTATES
ALNWICK

PROJECT
LIONHEART ENTERPRISE PARK SOUTH
LARCH DRIVE
ALNWICK
NE66 2BR

TITLE
ELECTRICAL ENGINEERING SERVICES
UNITS 1 TO 4
PROPOSED LIGHTNING PROTECTION LAYOUT

PROJECT NO.	STAGE
1445A	3 - SPATIAL COORDINATION

SCALE	SHEET	DRAWN BY	DATE
1:100	A0	DJW	JULY 2021

DRAWING REF	STATUS DESCRIPTION	ISSUE DESCRIPTION	STATUS
1445A-E-004	SUITABLE FOR TENDER	TENDER	D2
			T01